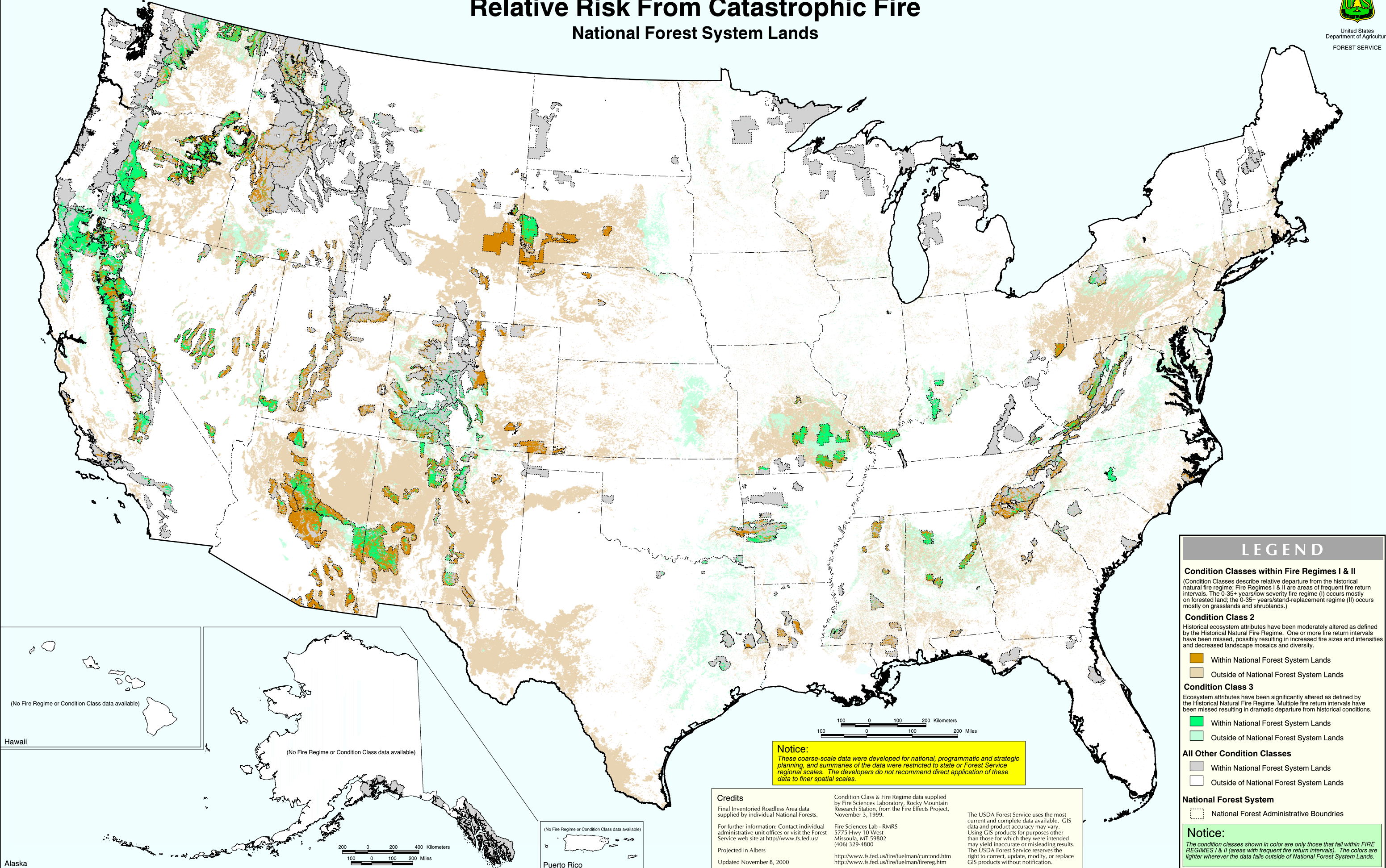


Relative Risk From Catastrophic Fire

National Forest System Lands



LEGEND

Condition Classes within Fire Regimes I & II

(Condition Classes describe relative departure from the historical natural fire regime; Fire Regimes I & II are areas of frequent fire return intervals. The 0-35+ years/low severity fire regime (I) occurs mostly on forested land; the 0-35+ years/stand-replacement regime (II) occurs mostly on grasslands and shrublands.)

Condition Class 2

Historical ecosystem attributes have been moderately altered as defined by the Historical Natural Fire Regime. One or more fire return intervals have been missed, possibly resulting in increased fire sizes and intensities and decreased landscape mosaics and diversity.

- Within National Forest System Lands
- Outside of National Forest System Lands

Condition Class 3

Ecosystem attributes have been significantly altered as defined by the Historical Natural Fire Regime. Multiple fire return intervals have been missed resulting in dramatic departure from historical conditions.

- Within National Forest System Lands
- Outside of National Forest System Lands

All Other Condition Classes

- Within National Forest System Lands
- Outside of National Forest System Lands

National Forest System

- National Forest Administrative Boundaries

Notice:

The condition classes shown in color are only those that fall within FIRE REGIMES I & II (areas with frequent fire return intervals). The colors are lighter wherever the data falls outside of National Forest System Lands.

Notice:

These coarse-scale data were developed for national, programmatic and strategic planning, and summaries of the data were restricted to state or Forest Service regional scales. The developers do not recommend direct application of these data to finer spatial scales.

Credits

Final Inventoried Roadless Area data supplied by individual National Forests.

For further information: Contact individual administrative unit offices or visit the Forest Service web site at <http://www.fs.fed.us/>

Projected in Albers
Updated November 8, 2000

Condition Class & Fire Regime data supplied by Fire Sciences Laboratory, Rocky Mountain Research Station, from the Fire Effects Project, November 3, 1999.

Fire Sciences Lab - RMRS
5775 Hwy 10 West
Missoula, MT 59802
(406) 329-4800

<http://www.fs.fed.us/fire/fuelman/curcond.htm>
<http://www.fs.fed.us/fire/fuelman/firereg.htm>

The USDA Forest Service uses the most current and complete data available. GIS data and product accuracy may vary. Using GIS products for purposes other than those for which they were intended may yield inaccurate or misleading results. The USDA Forest Service reserves the right to correct, update, modify, or replace GIS products without notification.